

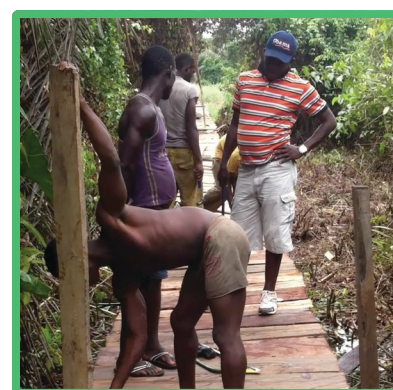


BUILDING FOR A  
BETTER FUTURE  
**TODAY**

# Who Are Dino's

Dino Akenzua, British and Nigerian (Dual national) Head of Marketing, Sales, Distribution, Fisheries, Cages and Fish Fry's Nursery his marketing skills and distribution skills are he strongest points with over 20 years as a self employed engineer and 10 years as a music promoter as help him to identified what people need at the right time and at the right place, and at the right price.

- 20 years of experience as a engineer in London
- 10 years music concert promoter in London
- 3 years as gas heating and hot water engineer lecturer in Kensington and Chelsea College, London
- Lifetime management and people skills



Charles Allanah, Nigerian. The Farm Manager and Deputy Manager for Marketing and Distribution. Charles has work with Guinness Nigeria Plc. for over 10 years as a independent supplier of cleaning agents for machinery. He therefore has a wealth of knowledge within the food and beverage industry in Nigeria. He is also an excellent manager with exceptional people skills.

- 10 years as a independent cleaning agent supplier
- 10 years in the food and beverage industry in Nigeria
- Life time management and people skills

Sunday Osunbor, Nigerian The deputy manager of fishery and farming, Sunday was born in the village of Evbuarhue and has lived and fish on the river for most of his life he also been a professional lumberjack for more than 15 years. Sunday is our first local employee and a key member of Dino's Fisheries.

Building For A Better Future, **Today.**

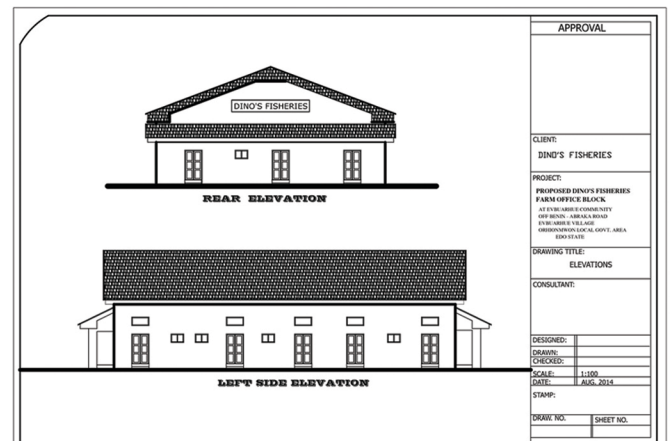
# Project Overview

**Dino's Fisheries** is a community/commercial organic fish farming project and our aim is to help and teach local villagers in Evbuarhue Village, Orhionmwon, Benin City, Nigeria. How to grow organic Blue Tilapia and Sharptooth Catfish in their local rivers in floating river cages from our fish farm at 1 Fish Lane, Evbuarhue Village.

Our organically grown fish allows us to supply low cost Nigerian produced fish into the domestic market to benefit lower income families, providing a high protein diet at a manageable and affordable cost.

To the right is the building plans for our farm office/workshop at the farm premises. The building will be use for the administration of the fisheries also the workshop will be use as a class room to teach the local communities how to grow fish in a save and healthy way.

The cost of the building is around N10,678,075.56 that's \$64,578.62. We are looking for investors or donations for this building program. We plan to start the project in Jan 2015 and have the opening of the office by Feb 14 2015 if you would like more information regarding the office building project kindly email us at [info@dinosfisheries.com](mailto:info@dinosfisheries.com) or visit our donate page and our investment page.



The Blue Nile Tilapia, *Oreochromis niloticus*, is a species of tilapia, a cichlid fish native to Africa from Egypt south to East and Central Africa, and as far west as Gambia. It is also commercially known as mango fish.

*Oreochromis aureus*, commonly known as Blue Tilapia is a species of fish in the Cichlidae family. The Blue Tilapia is a freshwater fish with a high tolerance for brackish water. Adults are usually 10 to 12 inches in length and weigh 5 to 6 pounds. The largest recorded specimen was more than 21 inches long and weighed more than 10 pounds. Blue Tilapia are mouthbrooders, and broods range from 160 to 1600 eggs per female.

## Building For A Better Future, **Today.**



# Sustainability - Setting Standards

**At Dino's Fisheries we're proud to be setting the standards for aquaculture.**

Every aspect of our tilapia production is closely monitored in order to produce the finest tasting fish possible, with minimal environmental impact. Our tilapia is farmed to the highest environmental standards and fed the best sustainable feed from Skretting. The feed is 100% Organic and contains only low levels of approved fishmeal and because of the use of sustainable feed and the production methods Dino's Fisheries systems are Net Fish protein producers.

## The Fresher The Fish

We all know that the fresher the fish, the better the flavour, so the good news is that compared to imported tilapia, our fresh Nigerian tilapia travels far fewer food miles. Nigerian tilapia has a much lower carbon footprint compared to imported fish and takes only a fraction of the time from harvest to customer.



## We Harvest Daily To Order

We harvest direct to order on a daily basis to ensure it reaches the customer in the shortest time possible.

## Traceability: From Catch To Consumer

All our systems and constant farming care means you can be sure you're getting top quality, environmentally friendly fish when you buy Nigerian tilapia – fully traceable from catch to consumer with no impact on ocean stocks or marine systems.



Building For A Better Future, **Today.**

# Health

Tilapia is a tasty and sustainable choice – but it's a healthy one too:

- Tilapia is low in fat and high in protein
- Tilapia is high in phosphorous, selenium, vitamin B12 and is also a source of niacin.
- Tilapia is a source of omega 3 fatty acids.\*

**The importance of a varied and balanced diet for good health is well established and tilapia can play its part. Health experts in the UK recommend at least two portions of fish a week, one of which should be oily fish like salmon, and any variety of white fish like tilapia.**

## \*Nutritional Breakdown of Tilapia

Tilapia (cooked, dry heat) – 100g

Calories – 129 kcal

Protein – 26g

Carbohydrate – 0g

Total fat – 2.7g

Sodium – 0.05g

Phosphorus – 204mg

Selenium – 45ug

Niacin – 4.7mg

B12 – 1.86ug

Omega 3 fatty acids – 240mg

Omega 6 fatty acids – 15mg



Building For A Better Future, **Today.**

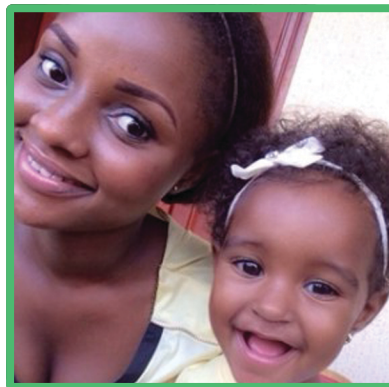
## Who We Sell To

Our core target market is low-income families who comprise an estimated 83% of our product sales. Middle-income families comprise 2% of sales with high-income families representing 1% of sales. The remaining 14% will be sold via retail establishments which include restaurants, grocery stores, hotels, beer parlours, fresh food markets and fish markets.

## Women

Dino's Fisheries knows that women are the backbone of developing communities. This is certainly the case in Nigeria. Statistics show that the average man reinvests about 30 percent to 40 percent of his income into his family, whereas the average woman reinvests 90 percent. Targeting support for key social institutions, plus scalable private-public partnerships that empower women and girls, will help ensure that Nigeria continues its path toward prosperity.

Investing in women entrepreneurs is a critical step in that path. Successfully starting a business helps women become self-sufficient, and provides more flexibility for their families. The [Global Entrepreneurship Monitor](#) reports that in two African countries, Nigeria and Ghana, women start businesses at a greater rate than men. Those models can and should be replicated across the continent.



Our women empowerment program is designed to help women start up small fish farms, vegetable farms and cassava farms. For instance, when the cassava is harvested, it's cooked and turned into Gari. This Gari is the main ingredient in our organic fish feed, and other vegetables such as peppers and herbs are also used in the organic feed. We buy all the products produced by our co-operative farmers to make our organic feed, guaranteeing a steady income for the small-scale farmer and their families.

Building For A Better Future, **Today.**

# Organic Feed

Our organic feed is grown without fertilizers, pesticides, herbicides and does not include genetically modified organisms (GMOs). Our organic tilapia fish is fed a completely organic diet, is antibiotic free and does not include animal GMOs.

Tilapia fish are vegetarian require different standards than carnivorous fish, as will bottom feeders. Also, environmentalists believe that because farm-raised fish tend to live in cramped conditions more water pollution may occur. And that why Dino's Fisheries only grown our Tilapia in floating cage at our farm river.

The growing seafood demand and depletion of wild fisheries creates a favorable market for farm-raised seafood. farm-raised product based on predominantly natural inputs should be certified organic or a close equivalent that strongly suggests "organic" and "natural." Currently, adherents of strict application of organic agricultural standards to aquaculture hold that the principles of organic aquaculture must include:

- Careful selection of sites for aquaculture farms.
- Protection of adjacent ecosystems.
- Active avoidance of conflicts with other users of the aquatic resources (e.g., fishermen) .
- Prohibition of chemicals (e.g.. as anti-fouling agents in net pens) .
- Natural remedies and treatments in the case of disease.
- Feedstuff from organic agriculture.
- Fishmeal and -oil in feed derived from by-products of fish processed for human consumption (no dedicated "feed fishery").
- Prohibition of GMOs, neither in feedstuff, nor in the stock itself.
- Processing according to organic standards.



Building For A Better Future, **Today.**



# Investments

Do you know that anytime you deposit your money at the bank, you are actually lending to the bank? Have you thought of how much the bank makes on your savings, fixed deposits and other investments in a year compared to what they give you? Have you also compared their interest rates on loans given to you to what you earn on your savings?

Our nation has an insatiable appetite for tilapia with demand for the fish running at ridiculous levels over the past decade resulting in us meeting a meager 42% of our requirements. This has exacerbated an unsustainable import bill which further hampers our economy because the impact caused by the importation of the fish impacts our balance of payments when we should be in a position to provide our fish domestically and create jobs and wealth for the indigenous masses.

Following a survey of local fish producers, the government commissioned a special facility to expedite the creation of a local market aimed at producing and elevating the existing tilapia market to new levels so that an economically viable entity will benefit all stakeholders from the indigenous peoples right through to the state fiscus via favourable tax initiatives.

Fish farming requires large capital expenditure, with start up costs initially high. However the long term return on investment benefits all counterparties in the value chain from producers transmitting through to the government by generating cash in the state coffers. Furthermore, because demand is extremely high the profitability for all stakeholders is more than sufficient.

The average return on investment is over 100% per annum. Let your money work for you while you sleep. Invest in this profitable fish farming business that yields a 100% in a year. People of various walks of life such as retirees, people in business, salaried workers etc are all invited to invest for a greater output. So this is your opportunity of making GOOD MONEY aside your regular job. Act Now, invest for a first mover advantage.

If you would like more information about investing in Dino's Fisheries Ltd and would like to see our project business plan. feel free to go to our website and register for a investor account and a user name to see our project business plan or send us a email requesting for the project business plan at:[invest@dinosfisheries.com](mailto:invest@dinosfisheries.com),

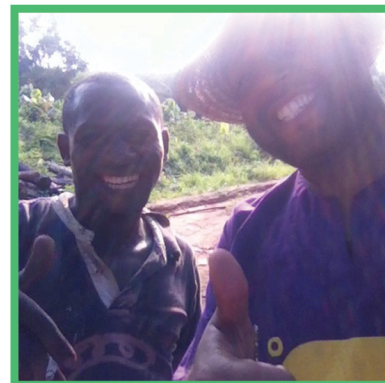
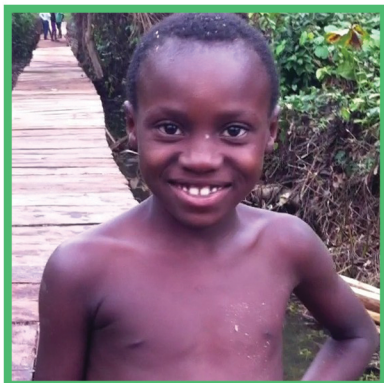
Building For A Better Future, **Today.**



# Dino's Fisheries Investment Opportunity

Investing in tilapia fish, very humble owner Prince Irobun akenzua. Is kindling, giving people the opportunity to participate in an aqua culture project situated in one of the most successful West Coast regions of African, "Nigeria". Populated with around 167 million people.

Minimum investment with Dino's fisheries is £5000 - £10,000 pounds.  
Providing a potential return of 42% over a two year timeframe.



Aquaculture is a great way for investors to diversify part of their portfolios away from traditional investments which so high levels of volatility and uncertainty.

The potential for excellent rates of return on investment are present.

Exit date in place for a 24 months holding time.

Providing all investors with quarterly reports on the performance of the investment.

Building For A Better Future, **Today.**



Building For A Better Future, **Today.**

Dino's Fisheries Ltd, 1 Fish Lane, Evbuarhue Village (off Benin), Abraka Road, Orhionmwon LGA, Benin City, Edo State, NIGERIA

Tel: +234 810 244 5704

Email: [invest@dinosfisheries.com](mailto:invest@dinosfisheries.com)